



PRODUCT RANGE

- **Infrastructure – water proofing stage**
- **Insulation Boards**
- **Filler Boards**
- **Piping Solutions**
- **Fitout – Architectural Products**
- **Other Products**

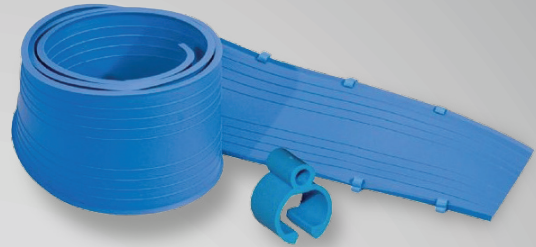


**INFRASTRUCTURE
– WATER
PROOFING
STAGE**

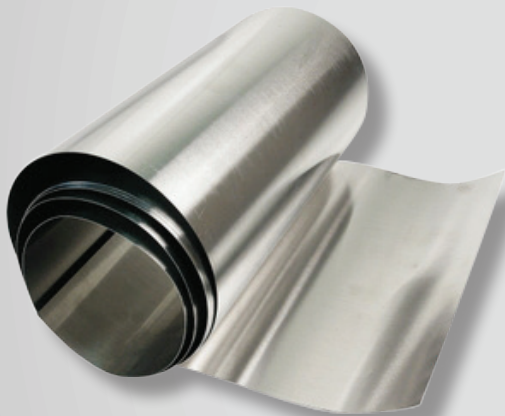
GEOTEXTILE



**WATER STOPS
(PVC, SWELLABLE & INJECTION)**



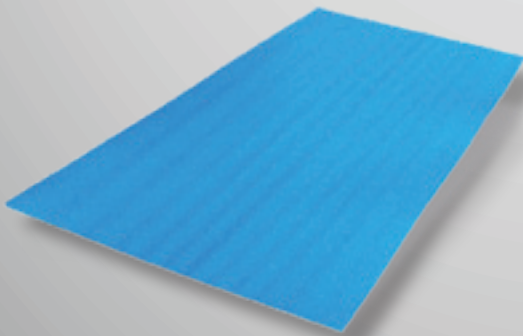
ALUMINUM FLASHING



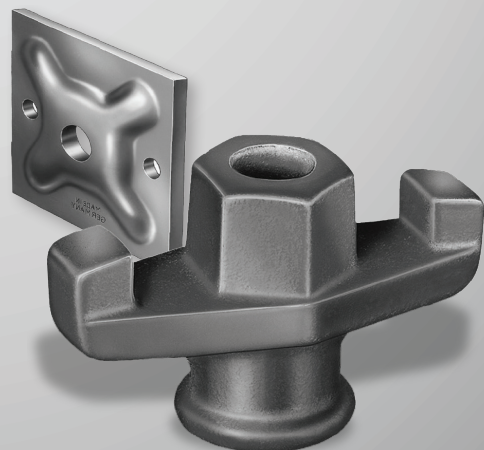
**SEALANT
(POLYURETHANE, SILICONE & LATEX)**



PROTECTION BOARD (POLYPROPYLENE)



FORMWORK ACCESSORIES



CONCRETING ACCESSORIES



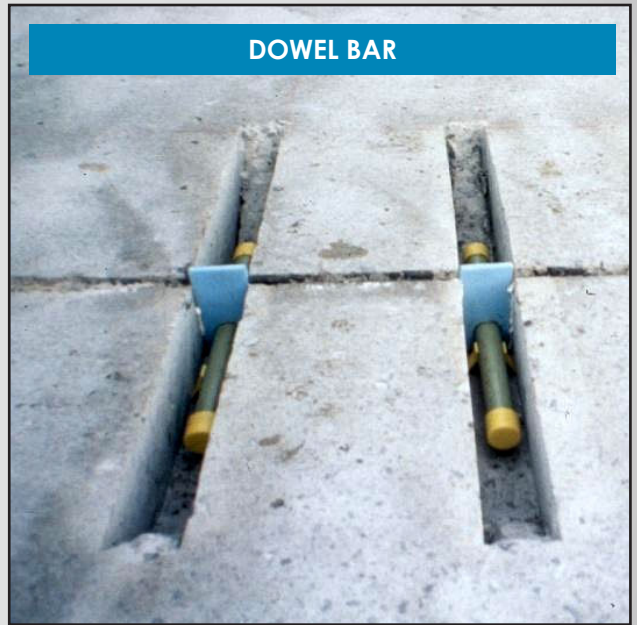
HY-RIB LATH



POLYETHYLENE SHEET / VAPOUR BARRIER



DOWEL BAR



DAMP PROOFING COURSE





**INSULATION
BOARDS**

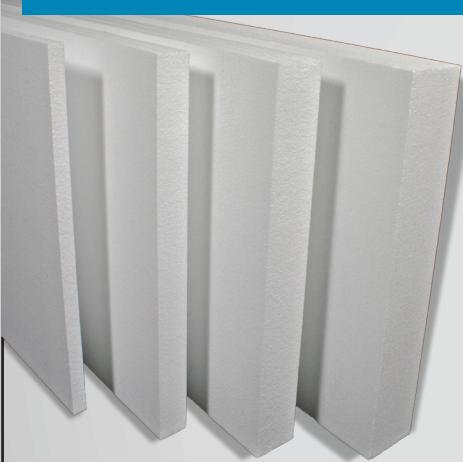
ROCKWOOL



EXPANDED POLYSTYRENE



EXTRUDED POLYSTYRENE



FIRE RATED INSULATION FOR DUCT





**FILLER
BOARDS**

BITUMINOUS BOARD



CORK BOARD



POLYETHYLENE BOARD



NEOPRENE BOARD



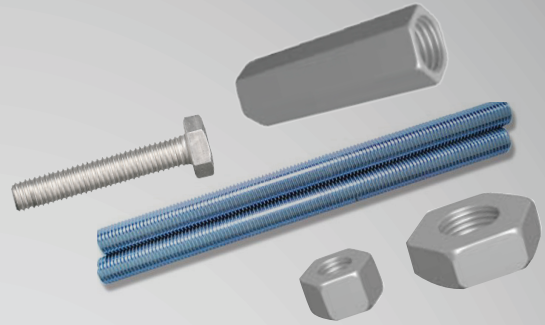


**PIPING
SOLUTIONS**

UL LISTED SUPPORTING SYSTEM (HANGERS, CLAMP,...)



THREADED RODS, BOLTS, SPRING NUTS, NUTS.



PVC, CPVC, UPVC PIPES & FITTINGS



HDPE PIPES & FITTINGS



PERFORATED PIPES



SOLVENT CEMENT



PVC CONDUIT



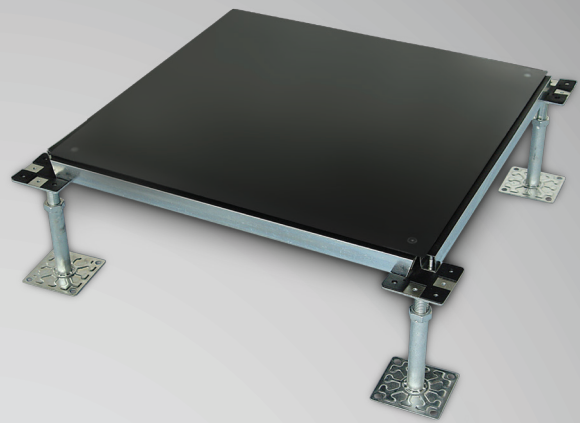


**FITOUT –
ARCHITECTURAL
PRODUCTS**

TILING ACCESSORIES (SS, BRASS,
ALUMINUM & PVC)



RAISED FLOOR



ENTRANCE MAT



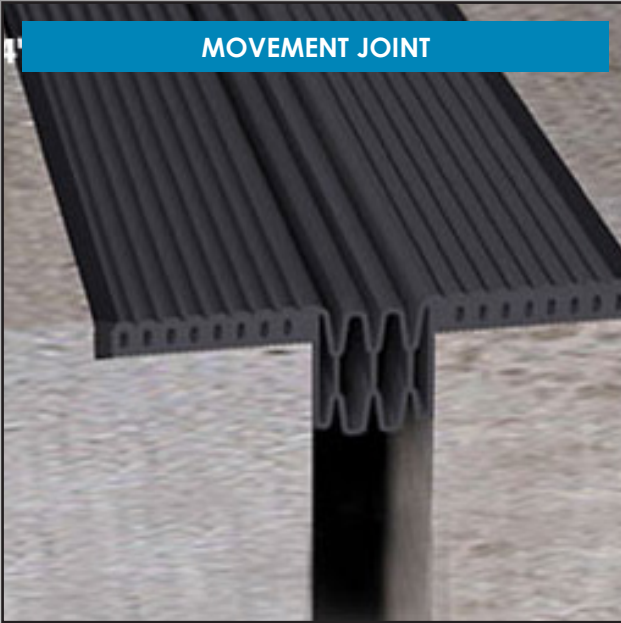
PARKING ACCESSORIES



EXPANSION JOINT COVER



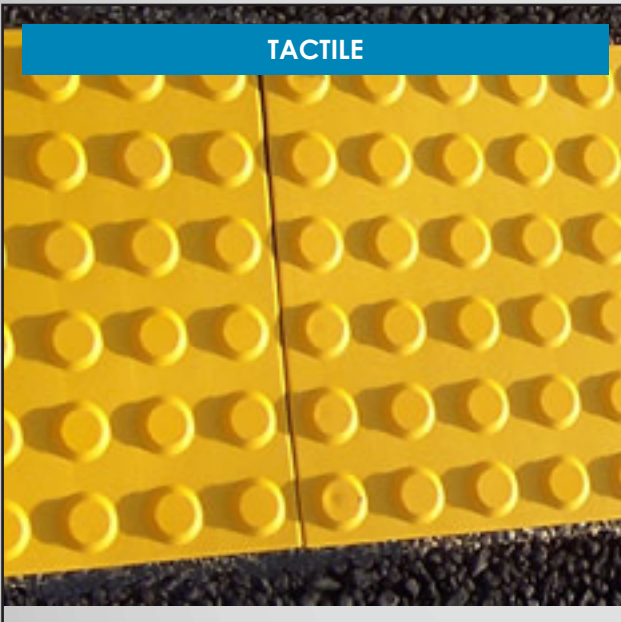
MOVEMENT JOINT



HAND RAILS



TACTILE



ADJUSTABLE PEDESTAL



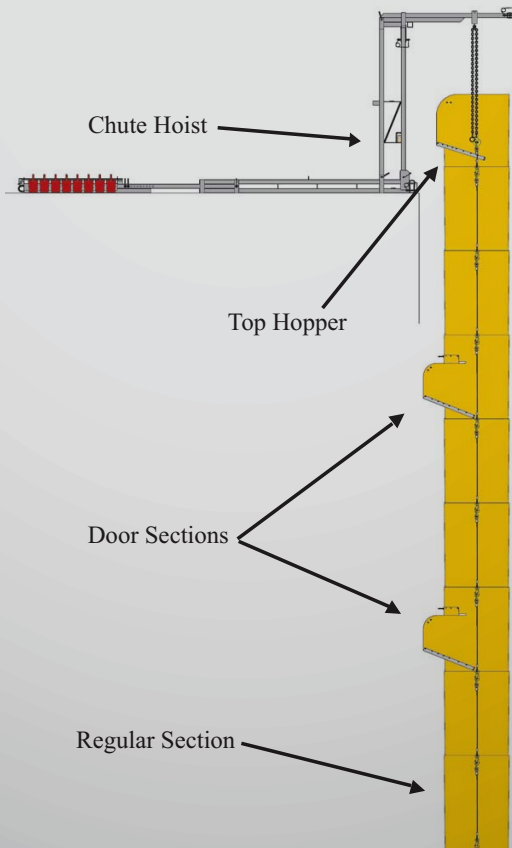
CORING MACHINES





OTHER PRODUCTS

DEBRIS CHUTE





MUHAMMAD AZMIE TAWACKOL

Senior Materials Engineer
(BsCE/PMP/CCP/CPCM)

Tel.: 4451 3301

Fax: 4451 3305

Mob.: 7040 8002

muhammad.tawackol@ikkgroup.com

Al Waab City – Salwa Road, 1st Floor,
Office No.A, Above HSBC Bank
P.O. Box: 23910 Doha-Qatar